

ReducingTM the Risk

of Domestic Abuse

IMPACT REPORT

2024 - 2025

Introduction

Reducing the Risk of Domestic Abuse (RtR) is an Oxfordshire-based charity keeping adults and children safe from the impact of domestic abuse and equipping professionals, volunteers and communities to respond well. We blend specialist high-risk advocacy (Provision) with training and networks (Prevention), underpinned by research, lived experience and strong multi-agency partnerships.

Annual Summary (April 2024 – March 2025)

PROVISION

High-Risk IDVA delivered sustained, people-centred advocacy, with improved safety, empowerment and strong client-reported outcomes at closure. Court IDVA supported safe engagement with criminal, family and civil courts, including DVPOs/NMOs.

PREVENTION

Champions, Primary Care and DA Friends embedded awareness, safe conversations and clear referral routes across employers, services and communities. Torchbearer® is translating this learning into place-based prevention, early help and recovery.

At Reducing the Risk, our aim is straightforward: keep people safe from domestic abuse and its impact, support them to recover and improve their lives and help the systems around them respond well. This year we've strengthened our **provision**; High-Risk support, our Court IDVA work, and our very new **Military** response launched in February, while growing our **prevention** offer through **training**, **Champions** and **DA Friends**. Working with partners and linking into local strategic pathways, we're joining the dots so people can get help earlier and support is consistent wherever they show up.

We're an evidence-based (and proudly learning) charity. We use research and service data, theories including implementation science, frontline practice wisdom and lived experience – and we're committed to adding to the evidence base, not just borrowing from it.

We owe a debt of gratitude to those with lived experience who give us their time and thought to guide the work. This includes the RtR Rural Advisor Group, our To Be Continued (TBC) ex client group, and their parents and families and the young people who are shaping our work. Their insights deepen our understanding of what works for whom in which circumstances – so we can share it, scale it and keep more people safe.

We thank our funders, supporters and advisors who help us to continue to deliver this vital service and support.

Dawn Hodson

Chief Executive

High-Risk IDVA Service

AT A GLANCE

261
New referrals

92%
Engaged to safety planning

200
Closed Cases

85%
Accepted

Average Case Length

37
weeks

223

Children supported

Children's Social Care involvement

61%

52%

of mental health conditions co-occur with substance use. Perpetrators frequently have significant substance misuse and MH needs.

What we do

Sustained, trauma-informed advocacy for adults and children at highest risk; coordination across MARAC, housing, health and justice; focus on immediate safety and longer-term recovery.

Outcomes

Immediate safety: personalised plans, target-hardening, safe moves, justice support.

Client-reported change at closure: 100% understood options and DA impact (self/children); 90% better able to cope.

What we're learning

Longer, more complex cases require sustained advocacy and robust partnerships; targeted children's work helps de-escalate safeguarding involvement by closure.

Priorities 2025/26

- Analyse MARAC repeat drivers.
- Deepen Primary Care engagement
- Track outcomes from recovery referrals (e.g. Own My Life, counselling).



Court IDVA Service (Oxford)

What we do

Support through **criminal proceedings**, first family hearings/child arrangements, and civil protection orders (e.g., NMOs/occupation orders); advice and advocacy around DVPOs; focus on informed, safe participation.

What support looked like

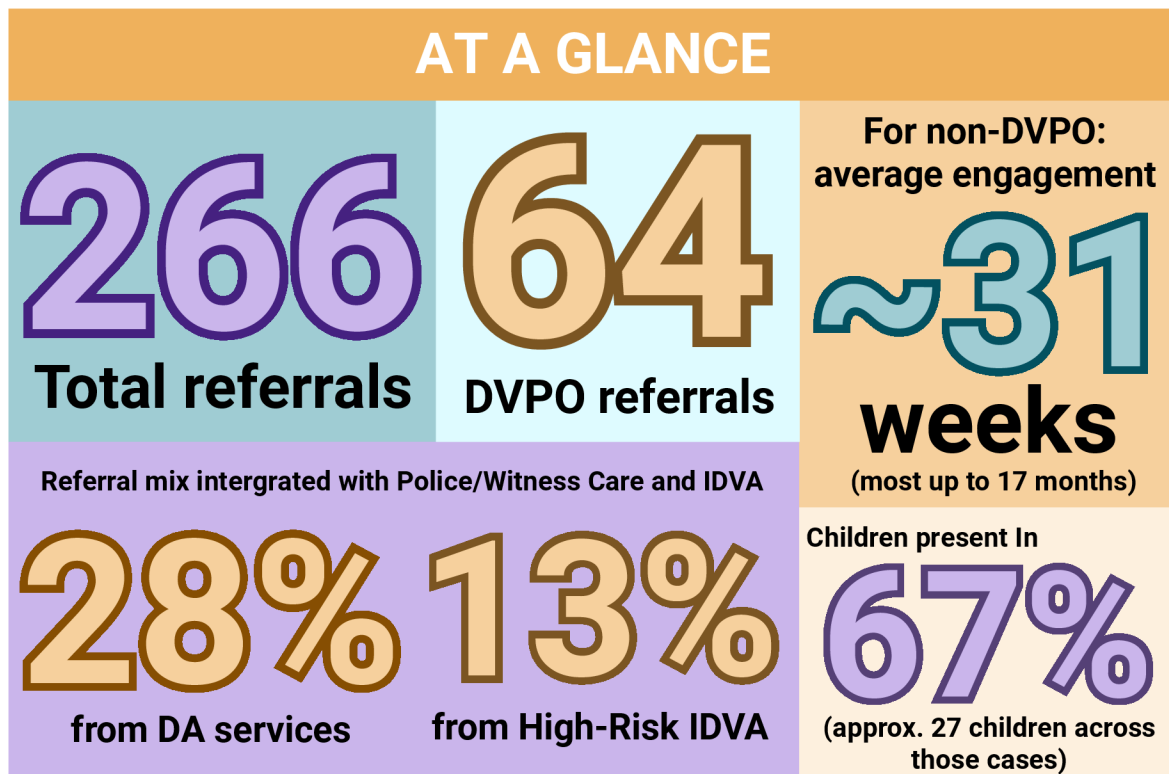
- **Criminal:** accompaniment from pre-trial to sentencing; practical NMO advice where relevant.
- **Family:** support at first hearings; navigation of legal aid.
- **Civil:** 32 NMO applications (incl. extensions) and 3 occupation orders supported; DIY NMO pathway reduced barriers.
- **DVPOs:** engagement associated with stronger grant rates where victims supported applications.

Outcomes

- **Empowerment:** 94% felt more informed/able to manage court; helpfulness rated 5/5 by all respondents.
- **Safety:** 52% strongly agreed (+21% agreed) they felt safer to attend; ~1/3 would not have attended without an IDVA.
- **Recovery:** positive but limited, as expected for a time-bound service; longer-term recovery picked up through wider pathway.

Learning & priorities

- Sustain strong professional referral routes.
- Grow rapid contact at DVPO application.
- Continue DIY NMO support.
- Strengthen onward links into recovery.



Champions, Training & Networks

What we do

Our Champions Network equips staff to LIFT their organisations approach to Domestic Abuse. They Lead, Inspire, Facilitate Support and Teach colleagues. We continue to develop our Primary Care Champions network alongside our Professionals Champions Network.



Outcomes & learning

Face-to-face and micro-sessions outperform purely online formats; clarity/speed of local referral routes remains a pinch-point; indirect influence (supporting colleagues) amplifies reach culture-wide.

Priorities 2025/26

- Link into Torchbearer sites.
- Extend Primary Care Champions.

AT A GLANCE (Apr 2024–Mar 2025)

139 NEW CHAMPIONS THIS YEAR

99% increased knowledge

84% supported at least one victim

92% referred or signposted

80% undertook safety planning

RtR Hub

7,000+

registered users

DA Friends & Community Engagement

What we do

Equip local people to Listen, Link and Lend a Hand by offering short, accessible sessions that help them notice concerns, have safe and supportive conversations, and know where to refer. These sessions are linked to the Champions network and RtR, ensuring volunteers are supported and not left holding risk alone.

Outcomes & learning

Participants reported significant gains in learning and confidence, leading to ripple-effect conversations across families, workplaces, and communities. Local, in-person delivery was identified as essential, while clear referral pathways and rapid access to advice were crucial for sustaining volunteer confidence and safety.

Priorities 2025/26

- Rollout Train-the-Trainer.
- Deepen Primary Care and rural delivery.
- Develop way of monitoring downstream referrals/outcomes from Friends conversations.



AT A GLANCE

489

**newly trained
Friends**

161
sessions

938
attendees

at least
40

**direct disclosures
with immediate
signposting**

Strategy & Learning Torchbearer®

Learning from training/surveys (knowledge, confidence, connectivity, peer support) is being embedded through Torchbearer learning sites (e.g. Abingdon, South Oxfordshire, Military communities) and employer programmes (e.g. OUH NHS Trust, schools) aligning prevention, early help and recovery.

Feedback from Clients & Partners

OVERALL EXPERINCE

High-Risk IDVA

100%

understood options
and impact

90%

felt better able to cope

Champions & Friends

Increased confidence to have safe
conversations and clearer routes to help.

Court IDVA

5/5

helpfulness from all respondents

In their Words

'When I was at my weakest
and worst times the IDVA
supported me and helped
me to get through It... she
never left me.'

'I would not have
attended court
without my IDVA.'

'I now know
where to link
someone to help.'

Looking ahead

1. **Sustain and extend the Court Service**
2. **Pilot the Torchbearer Approach**
3. **Develop and test the Schools Torchbearer Project**
4. **Embed the Surround the Base Approach within the Military Community**
5. **Continue to add to the body of evidence about things that work in Domestic Abuse Prevention, Partnership, Provision and Recovery**

Our thanks to our funders



- *Oxfordshire County Council*
- *Armed forces covenant*
- *The Henry Smith Charity*
- *Shanly Foundation*
- *National Lottery*
- *Norwich Trust*
- *Witney Town Charity*
- *Enthuse*
- *Abingdon Town Mayor*
- *The Dukes*
- *St Mary's Banbury*
- *The Big Give*
- *The Duck on the Pond*
- *Rotary Club Banbury*
- *Numerous WI's across Oxon*

Glossary



DA	Domestic Abuse
DIY NMO	NMO without a solicitor
DVPO	Domestic Violence Protective Order
IDVA	Independent Domestic Violence Advisor
MARAC	Multi-Agency Risk Assessment Conference
MH	Mental Health
NMO	Non-Molestation Order
OUH	Oxford University Hospitals
RtR	Reducing the Risk

Reducing the Risk

of Domestic Abuse



www.reducingtherisk.org.uk
contact@reducingtherisk.org.uk